

Installing the *Sumatra* Coffee machine

Step 1: Machine set-up

1. Carefully remove the machine and the instructions from the box.
2. Keep the box in a dry storage area in case it needs to be returned.
3. Connect the machine to the power cable. (Input located under machine)
4. Connect the power cable to the power source (230 volts).

Attention

- Place the machine on a dry, level, and uncluttered surface.
- Ensure at least 10cm of clearance on all sides of the machine.
- Install the machine in an area with a constant room temperature (20c).

Step 2: Installing the water filter

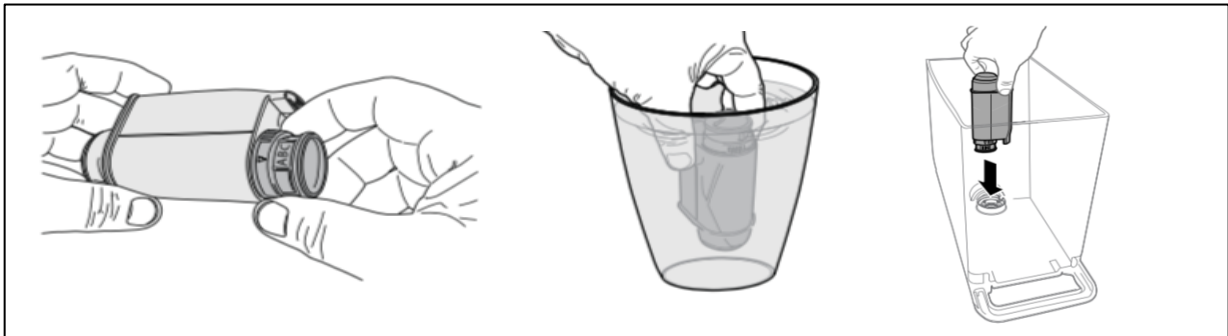
Please unpack the water filter and follow these steps:

ⓘ Installing the water filter is essential in preventing decalcification of the machine!

1. Set the filter to “C”

2. Hold it under water shortly to release bubbles

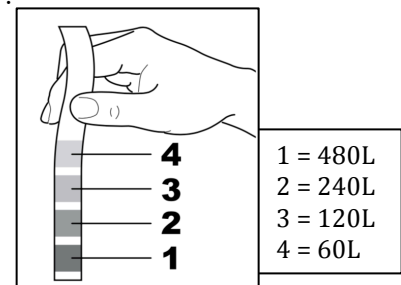
3. Place the filter in the water reservoir



Now, continue by going to: “**menu**” > “**user menu**” > “**Descaling**”:

Set “**water hardness**” to corresponding number from the measurement that you can take with the stick included. Check and count how many squares change of colour. This is the number you should put in.

The machine will now count the amount of litres used and notify you when the filter must be replaced.

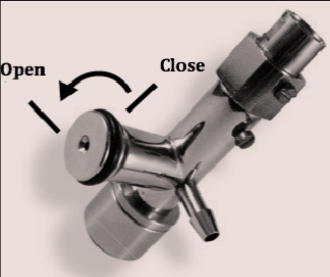



Using the Sumatra coffee machine

Attention! Be careful to use only Nespresso® compatible capsules.

Attention! Do not force the capsule drawer beyond its limit

Using the cappuccinatore (milkfrother)

<p>The further you open the cappuccino frother, the more you froth the milk. So: Close = Warm milk open (± quarter turn) = Milk foam</p>		 <p>Open knob, to activate cappuccinatore.</p>
--	--	---

Maintenance schedule

Operations	After usage	Daily	Weekly	When an alert is down
Clean cappuccinatore*	X	X		
Clean capsule drawer		X		
Clean water reservoir			X	
Rinsing program (user menu)		X		
Descaling				X

Pro tip: Place this maintenance schedule close to your Sumatra!

You can easily rinse the cappuccinatore by:

1. Take the tube out of the milk,
2. Hang the tube in cold / lukewarm water,
3. Open the knob of the machine. The water cleans the cappuccino frother.

*Milk is very sensitive to bacteria. Make sure to comprehensively clean the cappuccinatore on a regular basis! (At least a few times a day)